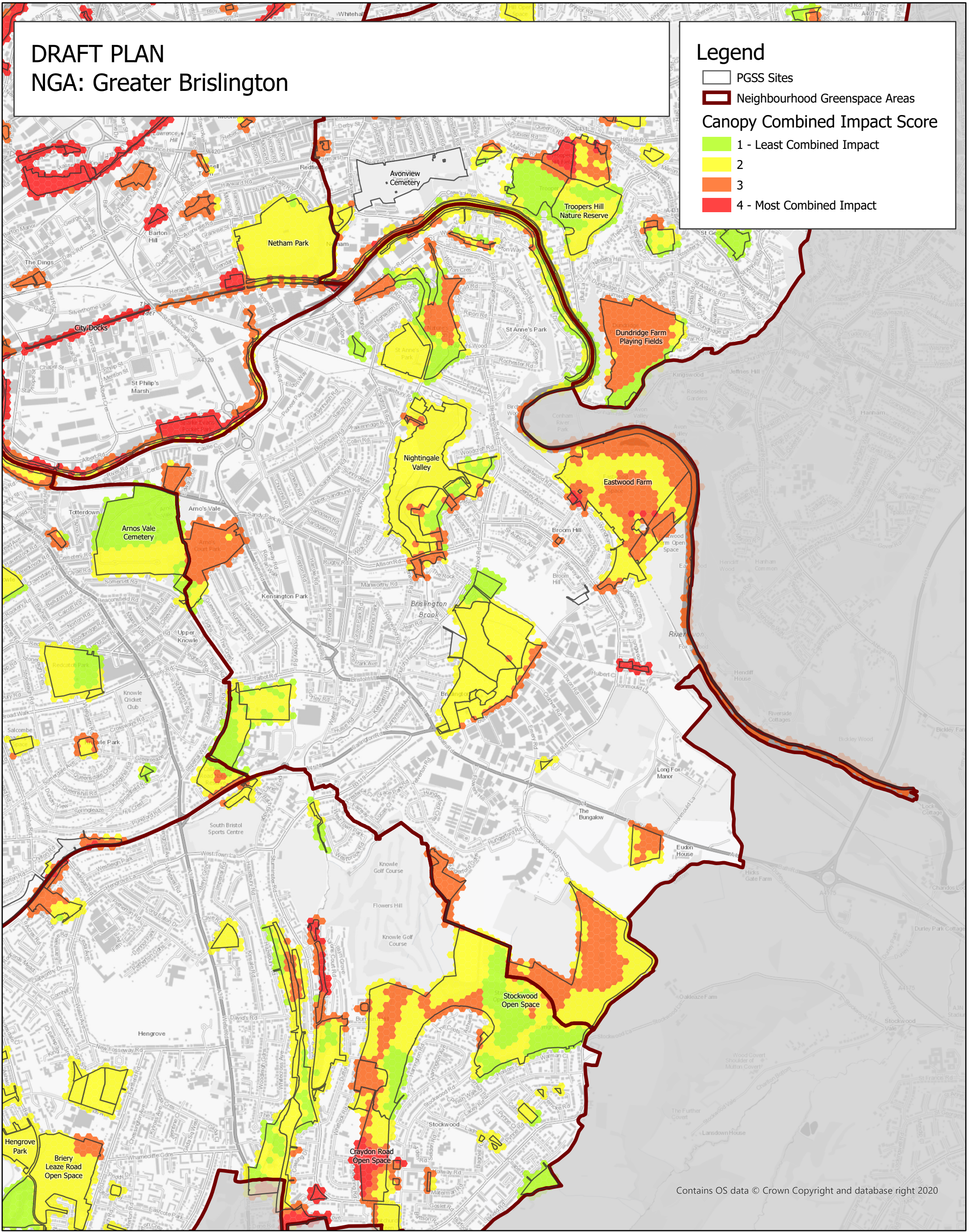


DRAFT PLAN NGA: Greater Brislington

Legend

-  PGSS Sites
-  Neighbourhood Greenspace Areas
- Canopy Combined Impact Score**
-  1 - Least Combined Impact
-  2
-  3
-  4 - Most Combined Impact



Contains OS data © Crown Copyright and database right 2020

Bristol Parks and Green Space Strategy DRAFT PLAN PGSS Potential Tree Canopy planting mapping showing combined impact scores on PGSS Sites.

Tree Impact Criteria were defined to identify areas where tree planting would deliver the greatest impact. Criteria applied are:

- a) Deprivation - Indices of Multiple Deprivation. Score 1 - 4 (4 being most deprived)
- b) Heat Risk Stress - Urban Heat Stress Vulnerability. Score 1 - 4 (4 being most heat stress risk)
- c) Nature Recovery - Nature Recovery and other nature networks. Score 1 - 4 (4 being of most ecological benefit)
- d) Tree Deficit. - Score 1 - 4 (4 being least treed)

The provision of information by Bristol City Council does not imply a right to reproduce or commercially exploit such information without the Council's express prior written permission. Reproduction or commercial exploitation of information provided by the Council without its express permission may be an infringement of copyright.

The council is unable to grant permission to reproduce or re-use any material that is the property of third parties. Permission to reproduce or re-use such material must be obtained from the copyright holders.



© Crown Copyright and database right 2023.
Ordnance Survey AC0000807971

PARKS & GREEN SPACES

Scale: 1:17,000 @A3

Date: 05/09/2023



GROWTH & REGENERATION
DIRECTORATE
MANAGEMENT OF PLACE SERVICE

GIS & Asset Management Team,
Bristol Parks Service
Bower Ashton Depot, Kennel Lodge Rd, Bristol.
bristolparks@bristol.gov.uk
www.bristol.gov.uk/parks